

Springfield Camping

WE ARE **THE** OUTDOORS RETAILER

Springfield Camping is a family run business which has been established for over 30 years.

We have over 30 tents on display which include dome, family, mountain and trailer tents.



3 floors of displays

- Waterproofs • Rucksacks
- Walking Boots • Fleeces
- Sleeping Bags • Climbing Gear
- Full range of accessories
- Calor and Gaz agents
- Tent and Marquee repairs
- Competitive prices



Order online: www.springfield-camping.co.uk

01422 883164

Denholme Mill, Burnley Road, Luddendenfoot HX2 6AR - 15 mins from M62

OPEN: MON-FRI: 9-5.30 • SAT: 9-5 • SUN: 11-5

Discover the magic of
Calderdale's Countryside

Wildside

April 2007 - March 2008



Calderdale
Council



MAKERS OF FINE QUALITY BOILED SWEETS SINCE 1850

*Visit Our Retail Shop
For One Of The Finest
Selections Of Continental
Chocolates & Confectionery*

*Corporate Gifts
& Wedding Favours*

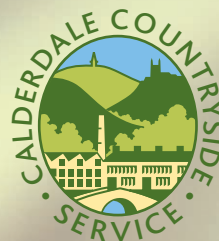
Retail Shop:

70 Southgate, Elland
West Yorkshire HX5 0PS
Tel: 01422 377 365
Email: miriam@dobsons.co.uk

*Organised Parties
May Visit Our
Factory By Arrangement*

Factory:

26 Northgate, Elland
West Yorkshire HX5 0RU
Tel: 01422 372 165 - Fax 01422 310 902
Email: sales@dobsons.co.uk
Website: www.dobsons.co.uk



Wildside walks and activities 2007/08

Welcome to the new Countryside Service walks and activities programme. This year's programme is once again packed with things to do to get involved in Calderdale's superb countryside. Whether you're young or old, can walk 2 miles or 10, there is sure to be something to suit your tastes.

This year is a special one for us in that it is Ogden Water's 150th birthday year. Watch out for special celebratory events spread throughout the programme. New for this year, we also have a series of family walks, which are aimed at families with children aged 5+, some of which include games and activities or picnics.

If you would like to become involved in the practical aspects of managing our countryside, then why not join us as a volunteer? Work parties run 7 days a week from sites across Calderdale working on projects ranging from tree planting to footpath maintenance and visitor management. Alternatively you could assist with educational visits from schools, lead walks in the next walks programme or work in the Ogden Water Visitor Centre. If you want more information, please contact Chris Sutcliffe on **01422 393208**.

Thanks to all our walk leaders and back-ups without whom there wouldn't be a walks programme and thanks for your continued support. Happy walking for the next 12 months.

Please note:

For information about grading of walks, what to bring, etc. please refer to page 4.

The National Trust at Hardcastle Craggs also run a guided walks programme. Please telephone **01422 844518** for details.

Calderdale Heritage Walks run a programme of Heritage walks. E-mail CdaleHeritageWks@aol.com for details or telephone **01422 201640**.

Taking Part

- Most activities are free.
- Dress appropriately for the activity. Walkers need boots, warm clothing and waterproofs, except for in summer when, boots/stout shoes and waterproofs should suffice.
- Jeans are unsuitable for walking unless you bring waterproofs.
- No booking is required unless stated in the programme.
- We would prefer you to leave your dog at home. If you do bring it please keep it on a lead at all times. Please note that Open Access land may have restrictions on dogs at certain times of the year, which may not be in force at the time of going to press. Please also note that some landowners have banned dogs from Open Access land permanently (for example Walshaw Dean Estate and Manshead Hill). Where dogs are allowed on Access land, they must be kept on a lead at all times. If in doubt, please leave your pet at home for the walk.
- No unaccompanied children under 16.
- Check bus times for 'bus walks' and bring change for the fare.
- The pace of our walks is relatively slow. If anyone gets ahead of the leader then we will assume that they have left the walk.
- Walks are circular unless otherwise stated.
- We would prefer it if you refrained from smoking whilst attending countryside walks and activities.

Useful contact telephone numbers

Countryside Service

Telephone: 01422 393295

Rights of Way team

Telephone: 01422 357257

Halifax Visitor Centre and Art Gallery

Telephone: 01422 368725

Hebden Bridge Visitor and Canal Centre

Telephone: 01422 843831

Todmorden Tourist Information Centre

Telephone: 01706 818181



Please Note

Whilst every care is taken on these walks and activities, please remember that everyone taking part does so at their own risk. We reserve the right to refuse to allow ill equipped people to take part if we feel that to allow them to do so could endanger themselves or others.

If you would like this information in another format or language, please contact: Julie Swift on 01422 393273 or e-mail julie.swift@calderdale.gov.uk






اگر آپ کو یہ معلومات کسی دوسری زبان
یا شکل میں چاہیے تو رابطہ کریں:

Julie Swift on 01422 393273
or e-mail julie.swift@calderdale.gov.uk

আপনি যদি এই তথ্য অন্য কোন মাধ্যম অথবা ভাষায় চান
তাহলে দয়া করে যোগাযোগ করুন :

Julie Swift on 01422 393273
or e-mail julie.swift@calderdale.gov.uk

Key

- E** Easy walk on level paths
- E/M** Easy walk, some climbing
- M** Moderate walk for anyone reasonably active
- M/H** Harder walk for experienced walkers
- H** Difficult walk for experienced walkers only
-  Bus available to near starting point
-  Train available to near starting point
-  Wheelchair and pushchair accessible
-  Bring lunch.
-  Sorry, no dogs with the exception of guide or hearing dogs
-  Particularly suitable for families (strictly no unaccompanied children)
- LNR** Walk visits Local Nature Reserve



Calderdale Children's Information Service (CIS) is your source for information about:

- **Choosing Childcare**
- **Early Education Places**
- **Careers in Childcare and Playwork**
- **Becoming a Childminder**
- **Tax Credits**
- **Holiday Activities**
- **Parent and Toddler Groups**

For impartial advice on these subjects and more:

Call in soon!

Telephone 01422 253 053

Click in soon!

Email cis@calderdale.gov.uk

Come in soon!

Visit us at Northgate House, Halifax

On the Web!

www.childcarelink.gov.uk

www.calderdale.gov.uk

SureStart Calderdale Council

April 2007

Sunday 1st April

Stoodley Pike - An April Fool's Walk!

Meet at 10.00 in Withens Clough reservoir car park, near Cragg Vale for a 4.5 mile walk.



Wednesday 4th April

Stainland to the Rocking Stone

Meet Graham Ramsden in the recreation ground car park, Stainland at 10.00 for an 8 mile walk.



Sunday 8th and Monday 9th April

Ogden Water Art Exhibition

Event organised by the Friends of Ogden Water

Come along between 11.00 and 16.00 to enjoy a variety of paintings and drawings in an exhibition portraying the seasons of Ogden Water. Pictures by local and regional artists of all levels. Some pictures on sale. Held in the Ogden Water classroom. No charge to look around. Refreshments available. For further information contact (01422) 249136/205050.



Monday 9th April

Bog Eggs and a Whiff of Andalucia

Meet Graham Ramsden at the playing fields at Old Town, near Hebden Bridge at 11.00 for a 4 mile walk.



Use Journey Planner at www.wymetro.com to plan your public transport journeys in Yorkshire.

Monday 9th April

Shibden Past and Present

Walk organised by Museums and Arts

Meet Mike Walton at 14.00 at the front of Shibden Hall, Shibden Estate, Halifax for a short walk.



Saturday 14th April

Springtime Saunter

Meet Colin Duke outside St. Stephen's Church, Copley at 13.00 for a 3 mile stroll around North Dean Wood.

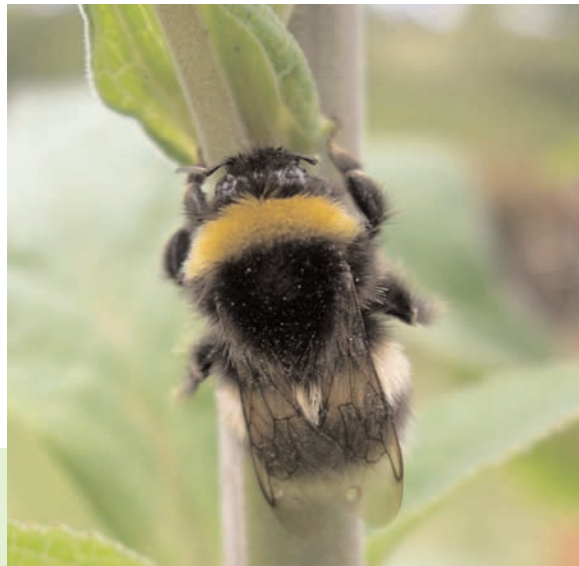


Sunday 29th April

Craft Fair

Event organised by the Friends of Ogden Water

Browse a selection of different craft stands, including local produce, jams, pickles, cakes, ceramics, jewellery, books and cards. For further information on stalls, contact Sandra on (01422) 240697. Open from 10.00 until 16.00 in the Ogden classroom.



May 2007

Sunday 6th May

Up Before The Sun - International Dawn Chorus Day

Hear the spectacle of British bird life waking up and greeting you at dawn. Meet Chris Sutcliffe at 5.00 (yes, in the morning!) in the car park off Beechwood Drive, Holmefield for a 2 hour walk. Bring binoculars if you have them. Ring Chris on 07769954956 for more information (or directions!).



Sunday 6th May

Todmorden Boundary Walk

Walk organised by Todmorden Rotary Club

22 mile walk starting at Belle Holme Sports Club, Rochdale Road, Todmorden.

7.30am registration, walk starts at 8.00.

Registration **Details: Prior to the event** forms from N.Caddy at 07775790612 or

The China Shop, Burnley Road, or **on the day**

at Belle Holme Sports Club. **Price:** Booked before the event £8 per adult, £5 for under 16. Register on the

day £10 per adult, £7 for under 16's. For other

information, please contact: N.Caddy 07775790612

or K.Shackleton at: kevshack@hotmail.com



Sunday 13th May

Erringden and Stoodley

Meet Norman Overend in Lobb Mill Picnic site car park, near Todmorden (off the A646) at 10.00 for an 8 mile walk to Mankinholes, Rake Head and Shaw Wood.



Join the Ramblers for 20% less.
See page 40 for details

Wednesday 16th May Shelf Evening Stroll through the Woods

Meet Jan and Chris Buckley at 19.00 in Shelf Hall Park (lower car park) off A6036 Halifax to Bradford Rd. for a 'Walk In The Woods Month' walk to look at the bluebells. 3 miles.



Sunday 20th May A Wander West of Sowerby Bridge

Meet Dave Curran in the car park near the Moorings pub, Sowerby Bridge at 10.00 for a 10 mile walk to Ripponden, Mill Bank and back with lunch at the Alma Inn.



Tuesday 22nd May A Stroll around Cromwell Bottom

Joint walk with SCOPE

Meet in the car park at Cromwell Bottom (to the rear of Cromwell House off the A6025) near Brighouse at 13.00 for a springtime walk around a beautiful Local Nature Reserve. Bring binoculars if you have them.



Wednesday 23rd May Adult Learner's Week Event - Woodland Plants and Trees

Come along to Cunnery Wood (top of Shibden Park) at 10.00 to learn how to identify common woodland species. Meet in the top car park, Shibden Estate, Halifax. £1 charge. Adults only please.



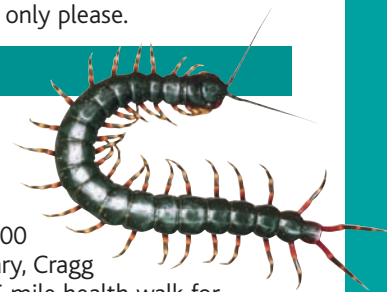
Wednesday 23rd May A Stroll through Gorpley Clough

Meet Mick Chatham at 18.30 in Gorpley Clough car park, Bacup Rd., Todmorden for a 2 mile walk up and down the Clough. Walk in the Woods month event.



Thursday 24th May Adult Learner's Week Event - Stream Dipping

Rediscover your inner child! Meet in the car park at Jerusalem Farm near Booth at 10.00 to find out more about the creatures that lurk in the stream. Wellies essential. £1 charge. Adults only please.



Thursday 24th May Be Nice to Nettles

Meet Mick Chatham at 13.00 outside Mytholmroyd Library, Cragg Rd., Mytholmroyd for a 4-5 mile health walk for 'Be Nice To Nettles' week.



Wednesday 30th May Kite Making and Flying

Join the staff at Ogden Water for a 'drop-in' kite making session. Sessions run 10.00-12.00 and 13.00-15.30. Cost £2 per child (includes all materials to make one kite). Tel. 01422 249136 for information. Playschemes welcome, but please telephone before attending to advise us about expected numbers of children attending. Sign Language interpreter available all day.



For places to stay, eat and visit in Calderdale, call:

Halifax Visitor Centre and Art Gallery 01422 368725
Hebden Bridge Visitor and Canal Centre 01422 843831
Todmorden Tourist Information Centre 01706 818181

Character, atmosphere,
warmth and great value at

Calderdale Markets

Market Halls

Borough Market, Halifax
Open Mon-Sat

Market Hall, Todmorden
Open Mon-Sat.
Half day closing Tues.

Car Boot Sale

Halifax
Open every Sun
and bank holiday
Mondays throughout the year.

Farmer's Markets

Hebden Bridge - Lee's Yard
1st and 3rd Sundays each month

Halifax - Russell Street
3rd Sat each month

Open Markets

Sowerby Bridge
New Market Venue scheduled for late spring 2007.
Open every Tues, Fri (General Retail)
and Sat (Second Hand)

Elland
Open Fri (General Retail and Second Hand)

Hebden Bridge
Open every Weds (Second Hand)
and Thurs (General Retail)

Todmorden
Open every Weds, Fri, Sat, Sun (General Retail)
and Thurs (Second Hand) Continental Markets -
(6-8 April and 16-18 November)

Piece Hall, Halifax
Open every Thurs (Second Hand), Sat (General
Retail) and selective Sundays throughout the year.

*Calderdale Markets offer personal service,
choice and bargains galore.*

Why not come and see for yourself?

19 Albion Street, Halifax
Tel: 01422 359034
Fax: 01422 348953
email: markets@calderdale.gov.uk

Calderdale
Council

Saturday 2nd June

Walk with the Rangers - Ogden Water

Meet Jan and Chris Buckley outside the Ogden Water Visitor Centre at 14.00 for a 2 mile walk to enjoy the views and learn about the practical work that has been carried out to help make the site what it is today.



Sunday 3rd June

Luddenden Valley - A Walk to Health

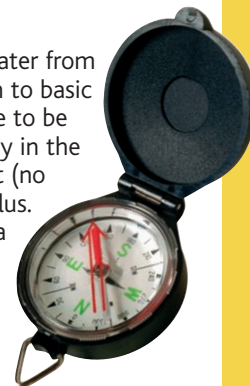
Meet Jan and Chris Buckley at 13.30 in the car park at Jerusalem Farm near Booth for a 3.25 mile walk through the beautiful Luddenden Valley.



Sunday 10th June

Map Reading for Beginners

Join Chris and Jan Buckley at Ogden Water from 10.00-16.00 for a one-day introduction to basic map reading for anyone who would like to be able to navigate the public rights of way in the countryside without fear of getting lost (no compass work)! Suitable for 14 years plus. Course costs £17 per person (includes a copy of the South Pennines map). Booking essential - 14 places available. Tel. 01422 243761 to book. Sign Language interpreter available if booked before May 23rd - e-mail julie.swift@calderdale.gov.uk Please bring outdoor clothing and sturdy boots.



Use Journey Planner at
www.wymetro.com to plan your public
transport journeys in Yorkshire.

Wednesday 13th June

Photography Walk

Meet Chris Sutcliffe and Gillian Booker outside Ogden Water Visitor Centre at 19.00 for a short stroll with plenty of opportunities to take photographs (Don't forget your camera!). Insect repellent recommended.



Saturday 16th June

From Jerusalem to see Catherine - A Family Walk

Meet Merrilyn in the car park at Jerusalem Farm, near Booth at 13.30 for a 3 mile walk in the Luddenden Valley with an historical theme.



Sunday 17th June

A Midsummer Meander

Meet Dave Curran in Mill Fold car park, Ripponden at 10.00 for a strenuous 7 mile walk to Norland, Mill Bank and Soyland.



Sunday 17th June

Understanding Map and Compass

Join Jan and Chris Buckley at Ogden Water from 10.00-16.00 for a full day navigation course. Please bring a compass with you. £17 per person (includes a copy of the South Pennines map). Booking essential - tel. 01422 243761 to reserve a place (only 14 places available). Suitable for over 14's only. Please wear outdoor clothing and sturdy boots.



Monday 18th June

Walking with Insects

Meet Julie Swift and Chris Sutcliffe in the car park behind Cromwell House, Cromwell Bottom (off the A6025) near Brighthouse at 14.00 for a short walk for adults hunting for bugs and other insects for National Insect Week and Dragonfly Week. Adults only please. £1 charge.



Thursday 21st June

Summer Solstice

Meet Dave Wilson and Robin Dalton outside the Ogden Water Visitor Centre at 19.30 on the year's longest day for a 5 mile walk. 50p charge. Bring a torch. Watch the sun go down with a cup of tea at the Nab. Suitable for children aged 8+.



Saturday 23rd June

Bronte Moors charity walk in aid of the Cystic Fibrosis Trust

Walk organised by Haworth and Worth Valley Rotary Club

Lovely scenery, 20 mile circular walk from Haworth (via Top Withens, Walshaw reservoirs, Hardcastle Crags). Entry form and information from Haworth & Worth Valley Rotary Club - Tel. 01535 604339/ 01535 646232.



Saturday 23rd June

Summer Time in the Shibden Valley

Meet Mike Walton in Shibden Estate TOP car park at 11.00 for a 5.5 mile walk around the Shibden Valley and Northwram and walk through the hole in the wall!



Sunday 24th June

Ogden Water Craft Fair

Event organised by the Friends of Ogden Water. Browse a selection of different craft stands, including local produce, jams, pickles, cakes, ceramics, jewellery, books and cards. For further information on stalls, contact Sandra on (01422) 240697. Open from 10.00 until 16.00 in the Ogden classroom.



Saturday 30th June

Moth Morning

Join Hugh Firman and Chris Sutcliffe at 10.00 in the middle car park, Shibden Estate, Halifax (behind Shibden Hall) to investigate the previous night's moth trap catch. Free event, but donations welcome to the Ogden Water WATCH group.



July 2007

Sunday 1st July

Blacks, Whites, Greens and Things

Meet Dave Curran at the bus stop opposite B&M Stores, Sowerby Bridge (recommend parking in the car park near the Moorings pub) at 10.00 to catch the 528 bus to Blackstone Edge (fare needed). 10 mile linear walk back to Sowerby Bridge via Green Withens and Boothwood.



Thursday 5th July

Wandering Around Walsden

Meet Mick Chatham at Walsden Station, near Todmorden at 09.30 for a 5 mile circular health walk (back in time for lunch).



Wednesday 11th July

Happy Birthday Ogden Water!

Meet David Wilson for a short walk, with informative banter and anecdotes on the history of Ogden Water. Part of the 150th celebrations. Meet at 19:00 outside the Visitor Centre. 1.5 miles walk. Easy listening.



Thursday 12th July

Tottering Around Todmorden

Meet Mick Chatham outside Todmorden Town Hall, Todmorden at 09.30 for a 4-5 mile health walk (back in time for lunch).



Join the Ramblers for 20% less.
See page 40 for details

Saturday 14th July

A Lost Estate

Meet Mike Walton in Shibden Estate TOP car park off Listers Rd., Halifax at 11.00 for a 4 mile walk to Southowram to look at properties that were part of the Shibden Estate until October 1925.



Wednesday 18th July

Bats at Jerusalem Farm

Meet Hugh Firman at 20.30 in the barn at Jerusalem Farm, near Booth for a short (c1.5 mile) walk with a short talk to learn about bats and their conservation. Free walk, but donations welcome to West Yorkshire Bat Group. Bring torches and insect repellent.



Thursday 19th July

Confusing Cornholme

Meet Mick Chatham in the car park next to St. Michael's church, Cornholme, near Todmorden at 09.30 for a 4-5 mile health walk (back in time for lunch).



Thursday 26th July

Yes, The Portsmouth near Todmorden

Meet Mick Chatham near the Roebuck Inn, Portsmouth, near Todmorden at 09.30 for a 4-5 mile health walk (back in time for lunch).



Friday 27th July

Freaky Friday - Environmental Games

Meet Chris Sutcliffe and Julie Swift in the car park off Beechwood Drive, Holmefield at 10.00 for fun and games in Beechwood Park aimed at children aged 6+ and their parents/carers. £1 per child. Playschemes welcome, but please telephone 01422 393273 to let us know expected numbers of children attending.



Sunday 29th July

Edging around Widdop

Join David Nortcliffe exploring the edge of Access Land north of the reservoir. Start at Widdop Reservoir car park on the Colne Rd. 6.5 miles NW of Hebden Bridge at 14.00 4.25 mile walk some of which is across rough terrain - walkers need to be well shod!



Sunday 29th July

Ogden Water Craft Fair

Event organised by the Friends of Ogden Water. Browse a selection of different craft stands, including local produce, jams, pickles, cakes, ceramics, jewellery, books and cards. For further information on stalls, contact Sandra on (01422) 240697. Open from 10.00 until 16.00 in the Ogden classroom.



For places to stay, eat and visit in Calderdale, call:

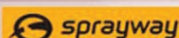
Halifax Visitor Centre and Art Gallery 01422 368725
 Hebden Bridge Visitor and Canal Centre 01422 843831
 Todmorden Tourist Information Centre 01706 818181



THE
CAMPING & OUTDOOR
CENTRE (HALIFAX) Ltd

OPEN
7
DAYS

EVERYTHING YOU NEED FOR THE GREAT
OUTDOORS, FRIENDLY AND HELPFUL STAFF
ALWAYS AT HAND.



We also stock: Vaude, Outdoor Scene, Wynnster, Aztec and Keela, Garmin, Aztec and many more.

HALIFAX ROAD, HIPPERHOLME, WEST YORKSHIRE, HX3 8ER
HTTP://WWW.CAMPING-OUTDOORS.CO.UK
T: 01422 203491 F: 01422 207092

August 2007

Wednesday 1st August

Looking Down on Lancashire!

Meet Mick Chatham at Kebcotes, near the Sportsman Inn on the Long Causeway, west of Blackshaw Head at 10.00 for a 9 - 10 mile walk for Yorkshire Day.



Wednesday 1st August

Wild Wednesday - Family Walk for Yorkshire Day

Meet Chris Sutcliffe at 10.00 outside Ogden Water Visitor Centre for a 5 mile stroll to the 'Nab' for lunch (bring a picnic) and back. Suitable for families with children over 8 (no pushchair access). Don't forget your white rose!



Thursday 2nd August

A Lazy Stroll from Lobb Mill

Meet Mick Chatham at 09.30 in Lobb Mill car park, near Todmorden (off the A646) for a 4-5 mile health walk (back in time for lunch).



BOAT TRIPS

from Sowerby Bridge Wharf



Get closer to wildlife afloat on a boat!
Explore the wonders of the local canals
from TUG OLIVER at Sowerby Bridge



Delight in the Ducks
Spot the fishes
(and watch out for Crocodiles)*



Regular Canal trips all summer
20 min Crocodile Cruises*, Afternoon Tea Cruises,
Curry nights and Charters
There's something for everyone!



*No one's seen one yet

Ring 07966 808 717

For daily details

Use Journey Planner at
www.wymetro.com to plan your public
transport journeys in Yorkshire.

Friday 3rd August

Freaky Friday - Grassland Minibeasts

Join Julie Swift and Chris Sutcliffe in the car park behind Cromwell House, Cromwell Bottom (off the A6025) near Brighthouse at 13.00 for a 2 mile walk. £1 charge. Suitable for children aged 8+ and their parents/carers - playschemes please tel. to book on 01422 393273.



Saturday 4th August

Walk with the Rangers - Ogden Water

Meet Jan and Chris Buckley outside the Ogden Water Visitor Centre at 14.00 for a 1.25 mile walk to enjoy the views and learn about the practical work that has been carried out to help make the site what it is today.



Sunday 5th August

Shibden Hall Estate 1615 -1933 the Home of the Lister Family

Walk organised by Museums and Arts
Meet Mike Walton at 14.00 in the sheep fold in the dry stone walling exhibition area, Shibden Estate, Halifax for a short walk around the perimeter of the park to look at some of the properties that were once part of the Estate.



Wednesday 8th August

Wild Wednesday - Nature Detectives

Join our very own super sleuth's Holmes and Watson outside the visitor centre, Ogden Water at 19.00 for a fun evening exploring Ogden Water. £1 charge per child.



Wednesday 8th August

Cuckoo Stone and Cock Hill

Meet Graham Ramsden at 10.15 in Withens Clough reservoir car park, Cragg Vale for a 6 mile walk.



Thursday 9th August

Callis or Calais

Meet Mick Chatham at Callis Bridge, on the A646 west of Hebden Bridge at 09.30 for a 4-5 mile health walk (back in time for lunch).



Wednesday 15th
August

Wild Wednesday - Stream Dipping

Join Julie Swift and Chris Sutcliffe for a stream dip at Jerusalem Farm near Booth. Wellies essential. £1 per child. Plus if the weather's nice, why not bring a picnic lunch? Numbers limited - please ring 01422 393273 to book.



Join the Ramblers for 20% less.
See page 40 for details

Thursday 16th August

Tourism and Hebden Bridge

Meet Mick Chatham outside Hebden Bridge Visitor and Canal Centre at 09.30 for a 4-5 mile walk (back in time for lunch).



Saturday 18th August

Family Walk and Quiz

Meet Marilyn outside the visitor centre at Ogden Water at 13.30 for a 2 mile walk around the reservoir and woods with a quiz. Route accessible by pushchairs.



Wednesday 22nd August

A Wizz up to Withens

Meet Graham Ramsden in Clough Foot car park, on the Slack to Colne Rd. just past the Packhorse Pub (below Walshaw Dean) at 10.00 for a 9 mile walk.



Wednesday 22nd August

Wild Wednesday - Stream Dipping

Join Chris Sutcliffe for a stream dip at Jerusalem Farm near Booth. Wellies essential. £1 per child. Plus if the weather's nice, why not bring a picnic lunch? Numbers limited - please ring 01422 393273 to book.



Thursday 23rd August

Mytholmroyd without the Coiners!

Meet Mick Chatham in Mytholmroyd Community Centre car park (off Caldene Avenue) at 09.30 for a 4-5 mile health walk (back in time for lunch).



Friday 24th August

Freaky Friday- Mask Making

Come along to Ogden Water for a drop-in mask making session between 10.00 and 12.00 or 13.00 and 15.30. £1 charge per child. Playschemes welcome, but please telephone before the event to advise staff about expected numbers attending - tel. 01422 249136.



Sunday 26th August

Ogden Water Craft Fair

Event organised by the Friends of Ogden Water

Browse a selection of different craft stands, including local produce, jams, pickles, cakes, ceramics, jewellery, books and cards. For further information on stalls, contact Sandra on (01422) 240697. Open from 10.00 until 16.00 in the Ogden classroom.



For places to stay, eat and visit in Calderdale, call:

Halifax Visitor Centre and Art Gallery 01422 368725
 Hebden Bridge Visitor and Canal Centre 01422 843831
 Todmorden Tourist Information Centre 01706 818181

Sunday 26th August
Boulsworth Hill and the Access Land

Join David Nortcliffe on a day walk over the Access Land to the highest point in this area. Full upland walking gear needed. If the weather is poor, a lower level walk will be substituted. Start at Widdop Reservoir car park on the Colne Rd. 6 miles NW of Hebden Bridge at 10.15. 8 miles.



Wednesday 29th August
A Bit of a Blow round Barkisland

Meet Graham Ramsden at 10.15 outside Barkisland Village Post Office for a 7 mile walk.



Wednesday 29th August
Wild Wednesday - Minibeast Hunt

Meet in the car park at Jerusalem Farm near Booth at 10.00 to find out what lurks in the leaf litter on the woodland floor. £1 charge per child.



September 2007

Saturday 1st September
Celebrating 150 years of Ogden Water

Calderdale Council and Yorkshire Water invite you to join in the celebrations for 150 years of Halifax's first drinking water reservoir. Events start from 10.00. Enter into the fun by coming along in Victorian dress and enjoy an ice cream on the re-created Victorian promenade. Brass bands, food, costume and other period entertainment. Plus more to be announced. For more information contact Ogden Water on 01422 249136.



Sunday 2nd September
150 Years Celebration Walk - Ogden Water

Meet Jan and Chris Buckley at 11.00 outside Ogden Water Visitor Centre, for a 5 mile walk to celebrate Ogden's birthday!



Sunday 2nd September
Cunnery Wood and Shibden Hall Estate

Meet Chris Sutcliffe and Mike Walton at 14.00 in the sheepfold in the dry stone walling exhibition area, Shibden Estate, Halifax for a short stroll around a Local Nature Reserve and Shibden Hall Estate.



Use Journey Planner at www.wymetro.com to plan your public transport journeys in Yorkshire.

Sunday 9th September

As The Crow Flies

Meet Dave Curran in Mill Fold car park, Ripponden at 10.00 for a 8 -10 mile walk to Baitings and Manshead with lunch at the Alma Inn.

M/H   (or pub lunch)

The Ogden Boggart Festival

Saturday September 8th
to 31st October

Ogden has a long and haunting history of being home to elusive, magical creatures known as Boggarts. Call into the Ogden Water Visitor Centre for a map, and then head out into the Ogden area to see if YOU can find them. Not for the faint hearted!

Visitor Centre Open Daily between 10.00 and 16.00. Distance: as far as you dare to walk!

Contact Ogden Water on 01422 249136 for details

Friday 14th September

Around Eastwood

Meet Norman Overend in Lobb Mill picnic site car park near Todmorden (off the A646) at 10.00 for a 6 mile walk to Hippins Clough and Great Rock.

M/H   



Saturday 15th September

Map Reading for Beginners

Join Chris and Jan Buckley at Ogden Water from 10.00-16.00 for a one day introduction to basic map reading for anyone who would like to be able to navigate the public rights of way in the countryside without fear of getting lost (no compass work)! Suitable for 14 years plus. Course costs £17 per person (includes a copy of the South Pennines map). Booking essential -14 places available. Tel. 01422 243761 to book. Please bring outdoor clothing and sturdy boots.

E/M    LNR

Sunday 16th

September

Shibden Shuffle - A Walk to Health

Meet Jan and Chris Buckley in Shibden Park BOTTOM car park, Halifax at 13.30 for a 4 mile stroll in the beautiful Shibden Valley.



E/M  LNR

Friday 21st September

Bridestones

Meet Norman Overend in Lobb Mill picnic site car park, near Todmorden (off the A646) at 10.00 for an 8 mile walk to Law Hill, Whirlaw and Cross Stone.

M/H   

Join the Ramblers for 20% less.
See page 40 for details

Saturday 22nd September Understanding Map and Compass

Join Jan and Chris Buckley at Ogden Water from 10.00-16.00 for a full day navigation course. Please bring a compass with you. £17 per person (includes a copy of the South Pennines map). Booking essential - tel. 01422 243761 to reserve a place (only 14 places available). Suitable for over 14's only. Please wear outdoor clothing and sturdy boots.



Sunday 23rd September Memory Walk

Event organised by the Alzheimer's Society
There are over 3,000 people with dementia in Calderdale. Enjoy a walk at the beautiful Ogden Water and raise valuable support and funds for them and their families. Routes available to suit all levels and abilities. The Alzheimer's Society Memory Walk is an international event and you will be joining forces with walkers across the world. For more information, registration and sponsorship forms contact us on 01422 352789.

Sunday 30th September Ogden Water Craft Fair

Details as per 26th August Craft Fair shown on page 25.

Sunday 30th September Fungi on the Rocks

Meet Colin Duke on Albert Promenade (Birdcage Lane End), near Savile Park, Halifax at 13.00 on the first foray of the season around Scar and Long Wood.



October 2007

Sunday 7th October In Search of the Source of the Calder

Meet Mick Chatham at 10.00 outside the Roebuck Inn, Portsmouth near Todmorden for a 9 -10 mile walk.



Sunday 7th October Fungus Foray 2 - Ogden

Meet Colin Duke at 13.00 outside the visitor centre at Ogden Water, Ogden Lane, off Keighley Rd., 4 miles north of Halifax for a Family Learning Week foray in the woods. Sign Language interpreter available if booked before Friday 21st September - e-mail julie.swift@calderdale.gov.uk



Tuesday 9th October Views Over Shibden Valley - A Walk for Health

Meet Mike Walton at 13.00 outside St. Thomas Church, Claremount Rd., Claremount, near Halifax for a short walk to see the site of High Sunderland thought to be the inspiration for Wuthering Heights by Emily Bronte (lasts approx. 1 hour).



For places to stay, eat and visit in Calderdale, call:

Halifax Visitor Centre and Art Gallery	01422 368725
Hebden Bridge Visitor and Canal Centre	01422 843831
Todmorden Tourist Information Centre	01706 818181

Thursday 11th October Fly by Night with the Countryside Service!

Join Hugh Firman and Chris Sutcliffe at 19.30 in the classroom at Ogden Water for an illustrated talk on owls and a walk through the woods to see the owls that are flying on the night (bring a torch and wear warm clothing). Family Learning Week event.



Saturday 13th October Withens Clough Roundabout - A Family Walk

Meet Merrilyn at 13.30 in the car park at Withens Clough, Cragg Vale for a 2.5 mile walk looking at autumn colours.



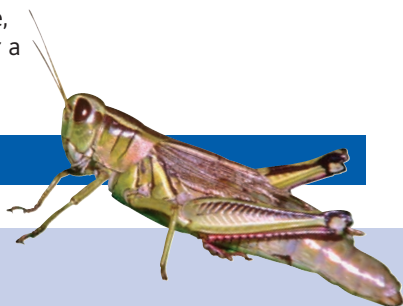
Sunday 14th October Fungus Foray 3 - Jerusalem Farm

Meet Colin Duke at 13.00 in the car park at Jerusalem Farm near Booth for a foray in the woods and grassland around the Local Nature Reserve.



Saturday 20th October A Circuit above Shibden

Meet Alan Greenwood in the sheepfold in the dry stone walling exhibition area, Shibden Estate, Halifax, at 13.00 for a 6 mile walk. Bring a drink and a snack.



Saturday 20th October Fungi in the Green

Meet Colin Duke by the Hinchcliffe Arms car park (please don't park your car in the pub car park), Cragg Vale at 13.00 for a foray around Green Bank and Turvin.



Sunday 28th October Ogden Water Craft Fair

Event organised by the Friends of Ogden Water. Browse a selection of different craft stands, including local produce, jams, pickles, cakes, ceramics, jewellery, books and cards. For further information on stalls, contact Sandra on (01422) 240697. Open from 10.00 until 16.00 in the Ogden classroom.



Wednesday 31st October Halloween Lantern Procession

Dare you join us for a walk with the ghosts and ghouls around Ogden Reservoir? 19.00 start. Bring a torch. 50p charge per person. Health warning: Very scary!!



Use Journey Planner at
www.wymetro.com to plan your public
transport journeys in Yorkshire.

When was the last time you went for a walk around one of our many beautiful reservoirs?

Whether you just want to take a gentle stroll, feed the ducks, or do something more adventurous, we've a reservoir for you – and many are on your doorstep.

Thanks to our investment over recent years, our land and reservoirs are more accessible than ever, whatever the time of year.

So what are you waiting for?

You can download walks – including this one at our Ryburn Reservoir – MP3 podcasts, children's activities and information on cycle paths, bridleways and easy access routes at:

yorkshirewater.com/yourenjoyment



YorkshireWater

Pennine Prospects

Working in and for South Pennines.

1 Creating strong links between town and country



2 Raising the profile of the Southern Pennines



3 Supporting local communities and the rural economy



Pennine Prospects, champion of the South Pennines, that dramatic and distinct landscape rich in biodiversity, built heritage and vibrant communities, which sits between the conurbations of Greater Manchester and West Yorkshire and includes the eastern districts of Lancashire. The Yorkshire Dales National Park bounds the area to the north and the Peak District National Park borders the region to the South East.

Pennine Prospects working in the South Pennines in partnership with:

Bradford MDC, Calderdale MBC, Kirklees MBC, Lancashire CC, Oldham MBC, Rochdale MBC, Rossendale BC, Natural England, National Farmers Union, Pennine Heritage, South Pennines Association, United Utilities plc, Yorkshire Water.

Pennine Prospects

For further information contact:
Pennine Prospects, Fourth Floor,
Jacobs Well, Bradford BD1 5RW
Company Secretary 01274 433536
ann.atkins@pennineprospects.co.uk
Development Manager 01274 431019
graham.joyce@pennineprospects.co.uk





Old Bridge Inn

*Your hosts
Tim and Lindsay Eaton Walker
welcome you to the Old Bridge Inn*

Tucked away in the heart of the Ripponden Conservation area, sits the Old Bridge Inn. The historic fourteenth century pub lies next to the packhorse bridge over the river Ryburn. Authenticity is the mantra here. Traditional 'real ales', genuine imported lagers and only home-cooked food are served daily. Antique furnishings, open fires and a dedicated staff all add to the ambience of 'The Bridge', which has been in the family since 1963.

Recommended by the following independent guides: Alastair Sawday's Special Places, The Good Pub Guide, The CAMRA Good Beer Guide, The AA Pub Guide, The Telegraph Quiet Pint and The Real Ale Pub Guide.

Monday - Friday 12-3 and 5.30-11
Sat 12-11 Sun 12-10:30
Food served every lunchtime 12-2
Mon-Fri evenings 6:30-9:30

Reservations recommended.

Tel: 01422 822595

Priest Lane . Ripponden . West Yorkshire . HX6 4DF



Voluntary
Action
Calderdale



Thought about Volunteering?

Call into one of Calderdale's Volunteer Centres

Volunteering is a fantastic way to make a great use of your skills and talents in new ways.

You can meet new people, improve your communication skills, gain experience and get involved with your local community.

There are over 300 different opportunities available

For more information contact Calderdale Volunteer Centre on 01422 348777 Fax 01422 348779 e-mail at vdm@cvac.org.uk www.cvac.org.uk

TODMORDEN VOLUNTEER CENTRE
Open Every Thurs 10am-12pm at Todmorden Social Care Service, 9 Burnley Road (opposite the Town Hall)

HEBDEN BRIDGE VOLUNTEER CENTRE
Open every Tues 10am-12pm at Salem Community Centre, Central Street, near the Co-op

HALIFAX VOLUNTEER CENTRE
30 Union Street, Mon, Tues, Thurs 11am-2pm

ELLAND VOLUNTEER CENTRE
Library, Mon 11am-12.30pm

BRIGHOUSE VOLUNTEER CENTRE
Library, Mon 1pm-3pm

SOWERBY BRIDGE
Contact VAC for details

Want to start your own voluntary/community group?

We can help with:

- Setting up an organisation/project
- Finding Funding
- Accessing relevant Training

For further details please contact Voluntary Action Calderdale on 01422 348777 or email info@cvac.org.uk

Activity & Community Development Team

Community Development Team

Working with community groups on crime reduction initiatives. For more information about crime reduction initiatives and our work with community groups, contact **01422 284403**

Events in Council's parks and open spaces. For information and advice on holding events on Council land, event licencing, and general advice on running events, contact **01422 284437.**

Community Wardens & Rangers

Helping to reduce crime and the fear of crime. We provide a high visible presence in target areas and get involved in crime prevention issues, community clean-ups, walking bus schemes and more. For more information, contact **01422 323811.**

Sports & Physical Activity Development Team

Helping more people become more active, more often. For information about coach education, club and community development, school to club links, sports equity, walking and cycling, Upbeat exercise referral scheme and the new Athletics Track at Spring Hall, please contact **01422 284441.**

Calderdale
Council

Activity & Community
Development

November 2007

Sunday 11th November

Historic Villages and Hamlets

Join David Nortcliffe for an afternoon walk round the old settlements of Calderdale's N.E. corner. Start at Bridle Stile car park, Shelf Hall Park (off A 6036) at 14.00. 4.75 miles



Sunday 18th November

Staups Moor and Blackshaw Head

Meet Jefferson Hammond outside Hebden Bridge Visitor and Canal Centre at 09.30 for a 10 mile walk.



Friday 23rd and Saturday 24th November Volunteer Open Day

Come along to find out more about volunteer opportunities with the Countryside Service. Please ring Chris Sutcliffe on 01422 393208 for details.

Sunday 25th November

Ogden Water Craft Fair

Event organised by the Friends of Ogden Water
Browse a selection of different craft stands, including local produce, jams, pickles, cakes, ceramics, jewellery, books and cards. For further information on stalls, contact Sandra on (01422) 240697. Open from 10.00 until 16.00 in the Ogden classroom.



Join the Ramblers for 20% less.
See page 40 for details

Join the Ramblers... for 20% less

There's no better way to explore your beautiful surroundings than taking a walk with your local Ramblers group.

The Ramblers' Association offers you the chance to get to know your local area, to share the views, hear the stories and most importantly, share the joy of being surrounded by breathtaking countryside, parks and open spaces. And you'll make new friends along the way too.

JOIN TODAY:

- Single membership - £19.20 a year (normally £24)
- Joint* membership - £25.60 a year (normally £32)

YOU'LL GET:

- Free walks with your local Ramblers group
- Quarterly magazine, **walk**
- Discretionary discounts, including 10% off at Millets and Blacks
- **walk BRITAIN** guide
- Access to our Ordnance Survey map library
- Satisfaction of supporting our footpath work

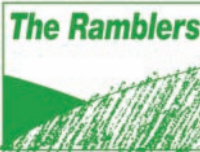


To join, go to www.ramblers.org.uk/offer and use code SD3 or call 020 7339 8500 quoting SD3.

* Two adults at the same address.

NB This offer is not available to existing Ramblers members.

**THE CHARITY
WORKING FOR
WALKERS**
www.ramblers.org.uk



December 2007

Sunday 2nd December

Bradshaw Round - A Walk to Health

Meet Jan and Chris Buckley outside Bradshaw Church, Pavement Lane, Bradshaw (off A629 Keighley Rd.) at 13.00 for a 4 mile around a lovely but less well known valley.



Saturday 8th December

Todmorden Toddle - A Family Walk

Meet Merrilyn outside Todmorden Railway Station at 13.00 for a 2 mile walk looking at some of Todmorden's history and art. Route accessible by pushchairs.



Saturday 8th December
and Sunday 9th
December

Santa's Visit to Ogden

See Santa arrive at Ogden Water, off the A629 Keighley Rd., at 12.00 on Saturday and visit him in his woodland grotto until 15.00. Open Sunday 11.00 - 15.00. £3.00 per child for entry to grotto (and present).



For places to stay, eat and visit in Calderdale, call:

Halifax Visitor Centre and Art Gallery	01422 368725
Hebden Bridge Visitor and Canal Centre	01422 843831
Todmorden Tourist Information Centre	01706 818181

Saturday 15th December

Jolly Jerusalem - A Family Walk

Meet Chris Sutcliffe at 13.00 in the car park at Midgley School, Midgley for a 3 mile walk to escape the hustle and bustle of this time of year. Thanks to Midgley J&I school for use of their car park.



Sunday 30th December

Ogden Water Craft Fair

Event organised by the Friends of Ogden Water

Browse a selection of different craft stands, including local produce, jams, pickles, cakes, ceramics, jewellery, books and cards. For further information on stalls, contact Sandra on (01422) 240697. Open from 10.00 until 16.00 in the Ogden classroom.



Ogden Water Countryside Centre

A community venue for learning, education, development and training.

The Ogden Water Centre is a multi-purpose facility, available to many different organisations, whether community group, public organisation or private business.

Set within a unique countryside location with stunning views, the Centre makes an ideal venue for a host of different educational activities, talks, training courses or other events. With a variety of facilities available, the Centre can comfortably accommodate 30 adults or 35 children, and can be booked for the whole day, half a day, or for the evening.

The Centre is automatically available to schools and groups booking environmental education activities at Ogden with Calderdale Countryside Service.

For further information and full details of facilities, tariffs and bookings, please telephone **01422 249136** or e-mail Ogden.water@calderdale.gov.uk



January 2008

Saturday 5th January

Post Christmas Blues! - A Family Walk

Join the Ogden staff outside the visitor centre at Ogden Water at 13.00 for a 3.5 mile walk for some fresh air after the recent festivities.



Sunday 13th January

Bell Hole and Erringden Moor

Meet Jefferson Hammond outside Hebden Bridge Visitor and Canal Centre at 09.30 for a 10 mile walk.



Saturday 26th January

Try an Alternative to Garden Birdwatch - Wood Birdwatch

Meet Colin Duke in the car park at Park Wood crematorium, near Elland at 10.30 for a 2-hour stroll to watch winter woodland birds. Bring binoculars if you have them.



Use Journey Planner at www.wymetro.com to plan your public transport journeys in Yorkshire.

Sunday 27th January Ogden Water Craft Fair

Event organised by the Friends of Ogden Water. Browse a selection of different craft stands, including local produce, jams, pickles, cakes, ceramics, jewellery, books and cards. For further information on stalls, contact Sandra on (01422) 240697. Open from 10.00 until 16.00 in the Ogden classroom.




Educational visits for schools with Countryside Service



Teachers, why not bring your class on a visit to one of our beautiful countryside sites?

Ogden Water, Jerusalem Farm and Shibden Estate have much to offer to assist you to deliver the National Curriculum across a range of subjects including Science, Geography, Citizenship and Art. Half day sessions for Calderdale schools cost just £2.70 per head (or £5.40 for full days).

For external groups the charge is £3.70 per head and £7.40 per head respectively (school staff and helpers are free). Two members of Countryside Services staff will work with your class and will provide all materials used during the workshop. All sessions are fully risk assessed, and teachers are welcome to arrange a pre-visit to a site.

For more information, or to book a visit please telephone Julie Swift, Environmental Education and Interpretation Officer on **01422 393273**

February 2008

Saturday 2nd February Luddenden Winter Birds Walk

Meet Chris Sutcliffe at 13.30 in the car park at Midgley J&I School, Midgley for a 4.5 mile walk to look for birds in winter. Bring binoculars if you have them. Thanks to Midgley J&I school for use of their car park.



Sunday 10th February Geology Jaunt

Meet Tim Edge at 10.30 in the top car park, Shibden Estate, Halifax (off Shibden Hall old road) for a gentle walk discovering the secrets of the landscape. Lasts 5 hours.



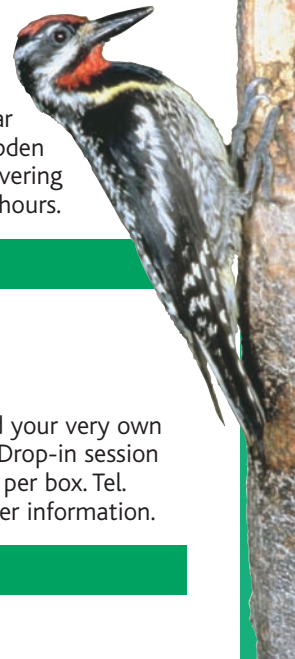
Saturday 16th February Bird Box Making

Come along to Ogden Water to build your very own des. res. for National Bird Box Week. Drop-in session between 10.00 and 12.00. £4 charge per box. Tel. 01422 249136 if you need any further information.



Sunday 17th February Around Midgley Moor

Meet Jefferson Hammond outside Hebden Bridge Canal and Visitor Centre at 10.00 for an 8 mile walk.



Join the Ramblers for 20% less.
See page 40 for details

Sunday 24th February Ogden Water Craft Fair

Event organised by the Friends of Ogden Water. Browse a selection of different craft stands, including local produce, jams, pickles, cakes, ceramics, jewellery, books and cards. For further information on stalls, contact Sandra on (01422) 240697. Open from 10.00 until 16.00 in the Ogden classroom.



Ogden WATCH group a wildlife club for children



Interested in
wildlife?

Want to find
out more about
the natural
environment?

Why not join
the Ogden
WATCH group?

WATCH groups are designed to provide children with the opportunity to discover, enjoy and help protect their local environment.

The **Ogden WATCH** group is open to anyone between the ages of 8-14, but younger children are welcome provided they are accompanied by an adult.

We meet once a month outside the Ogden Water Countryside Centre (unless stated otherwise). All sessions must be booked in advance. £1 charge per session.

**For more information please call
Chris on 01422 393208**

March 2008

Saturday 1st March

North Dean Woods - A Walk to Health

Meet Jan and Chris Buckley at the front of Clay House, West Vale at 13.00 for a 3-mile walk through North Dean Woods and along the canal.



Sunday 9th March

Waking Up From Winter - Woods and Water

Meet Alan Greenwood in the car park at Cromwell Bottom (to the rear of Cromwell House off the A6025) near Brighouse at 14.00 for a 6-mile walk through Elland Park Wood to Southowram. Bring a drink and a snack.



Saturday 15th March

Amphibians

Meet Colin Duke at 10.30 in the car park at Cromwell Bottom (to the rear of Cromwell House off the A6025) near Brighouse for a stroll to learn about the amphibians of this Local Nature Reserve.



Saturday 15th March

Hebden Bridge Hobble - A Family Walk

Meet Merrilyn outside Hebden Bridge station at 13.30 for a 3 mile spring saunter by canal, woodland paths and lanes. N. B. Not accessible for pushchairs.



For places to stay, eat and visit in Calderdale, call:

Halifax Visitor Centre and Art Gallery	01422 368725
Hebden Bridge Visitor and Canal Centre	01422 843831
Todmorden Tourist Information Centre	01706 818181

Sunday 30th March

Beacon Hill and the Magna Via

Meet Jan and Chris Buckley in the car park at Cromwell Bottom (to the rear of Cromwell House off the A6025) near Brighouse at 10.30 for a 7-mile walk.



Sunday 30th March

Ogden Water Craft Fair

Event organised by the Friends of Ogden Water. Browse a selection of different craft stands, including local produce, jams, pickles, cakes, ceramics, jewellery, books and cards. For further information on stalls, contact Sandra on (01422) 240697. Open from 10.00 until 16.00 in the Ogden classroom.



CALDERDALE HERITAGE WALKS

2007

Discover more about Calderdale's history, how the area evolved, and what went on in our towns and villages in earlier times.

There's a walk almost every Sunday afternoon from late April to early October plus some midweek evening walks May to July.

8 brand new walks this summer at Luddenden, Mytholmroyd, Barkisland, Old Town, Hebden Bridge, Lightcliffe, Rastrick and Sowerby.

Walks are normally about 2 hours and cost £3 per head.

Full details in the free programme available from Tourist Information Centres, Libraries, Museums, Countryside sites and Council Offices in Calderdale. Or email: CdaleHeritageWks@aol.com and we'll send you the electronic version.

These walks are organised by Calderdale Heritage Guides.

Jerusalem Farm Campsite



Jerusalem Farm is situated between Halifax and Hebden Bridge in the heart of the picturesque Luddenden Valley in rural Calderdale. The campsite is on a flat grassy area adjacent to Luddenden Brook and Wade Wood, which is designated as a site of ecological and geological interest (S.E.G.I.) due to it being a good example of mixed deciduous woodland. The site offers campers all the basic facilities one would expect on a campsite without being commercialised and has an added bonus in that the site is not accessible to cars (the car parking area is a couple of minutes walk from the camping area) which helps create a feeling of peace and tranquillity on the site. Jerusalem Farm is ideal for people who wish to escape from the pressures of everyday life and offers visitors the opportunity to get back to nature in an idyllic setting.

Charges for 2007

Site open April 6th - September 30th

£5 per night for adults

£3 per night for children

under 15 (Under 5's free)

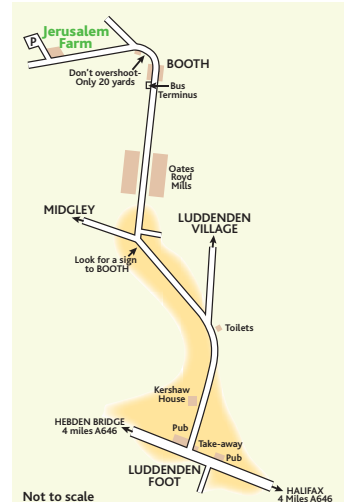
No under 18's unless accompanied by a parent or guardian.

£3 per night per person for organised groups (schools, Duke of Edinburgh etc.)

£1 discount for Passport to Leisure holders

Please contact **01422 883246** for further information.

Jerusalem Farm Campsite Booth, Halifax, West Yorkshire HX2 6XB



Peace + tranquillity... Camping...
Walking... Local Nature Reserve...

Friends of Ogden Water

Ogden Water Local Nature Reserve is set in the picturesque and tranquil surroundings of the South Pennines. Enjoyed by many thousands of visitors each year from Calderdale and Bradford, it provides a welcome venue for groups, families and walkers to enjoy the fresh air, view the local wildlife and to relax.

Helping to look after and promote the area are the Friends of Ogden Water, a group of people from the local community who are brought together by their shared affection for the area.

The Friends get involved in many activities. Practical conservation days, organised events, talks and social gatherings are all part of how we actively enjoy working at and visiting this idyllic location.

We welcome members of all ages and backgrounds to join us, whatever their experience, ability or amount of time available to help. And a regular newsletter keeps all informed of what is going on. To find out more, visit our website at:

www.ogdenwater.org.uk or ring (01422) 249136



Calderdale **Walk it**

Walk-it aims to encourage you to walk those short distances rather than sitting in traffic wasting time, adding to congestion, parking problems, pollution and being frustrated! Walking is also an excellent way to improve your health. Just 30 minutes a day of moderate activity, such as brisk walking can help reduce or control your weight, reduce the risk of heart disease, certain cancers and osteoporosis.



Walk-it information leaflets show you how long it takes to walk in to Halifax Town centre.

It shows walking times of 5,10,15 and 20 minutes to the centre. You will also notice signs on pavements showing how long it takes to walk-it.

For a free Walk-it leaflet, please contact:
Calderdale Transportation on 01422 392103
or e-mail -Transportationteam@calderdale.gov.uk

Calderdale
Council



For details about buses and trains

Visit

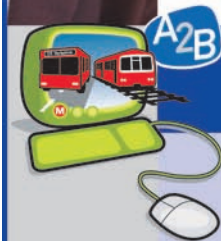
www.wymetro.com

Call

**MetroLine on
0113 245 7676**

Open 0700 to 2200 daily
(excluding Christmas Day,
Boxing Day and New Year's Day).

Call into a Bus or Train
Station **Travel Centre**



Use **Yorkshire
Journey Planner**

Visit Metro's home page
at www.wymetro.com and
choose Journey Planner to plan
your next journey from A2B.

Text yournextbus

Get real-time information by
creating a text message on your
mobile. Text the eight digit bus stop
number, shown on the bus stop
flag, to 63876 (this spells METRO).



Save time and download your timetables from

www.wymetro.com